



7016D Autosampler shown with 6L Canisters

Features

- Automated Analysis**
 Up to sixteen 6L Silonite™ canisters can be analyzed in accordance with EPA Methods TO-14A and TO-15.
- Back-Flushing of Each Line After Analysis**
 Using automated software control.
- Automated Leak-Checking**
 Verification of leak-tight connections prior to opening valves.
- Silonite™ Coated Inlet Lines**
 Ultra-inert flow paths for recovery of reactive compounds.
- Complete SmartLab™ II Automation**
 Sophisticated Windows® compatible software with precise automation control via USB connection.
- Easy Valve Alignment**
 Simple adjustment of digital feedback sensor.

7016D Canister Autosampler

The ultimate autosampler for large canister whole air analysis, now better than ever.

The new 7016D features 16 inlet positions that bring Entech's automated analysis capabilities to a wide variety of vacuum sampling canisters and Tedlar® bags. The 7016D easily connects to a 7200 Preconcentrator for the automated analysis of VOCs in canisters with EPA Toxic Organics Methods TO-14A and TO-15.

The 7016D is controlled through the advanced 7200 Windows® platform and incorporates an all-new, digitally controlled rotary valve actuator with "smart positioning" that improves port alignment. Valve alignment is easy and no longer requires rotation of the valve and tubing. All flow path tubing throughout the 7016D system is Silonite™ coated and heated to further reduce flow path carryover while maximizing sample recovery.

The Most Flexible and Accurate Large Canister Solution for EPA Methods TO-14A and TO-15.



The 7016D easily adapts for the analysis of large canisters, MiniCans™, and Tedlar® Bags.



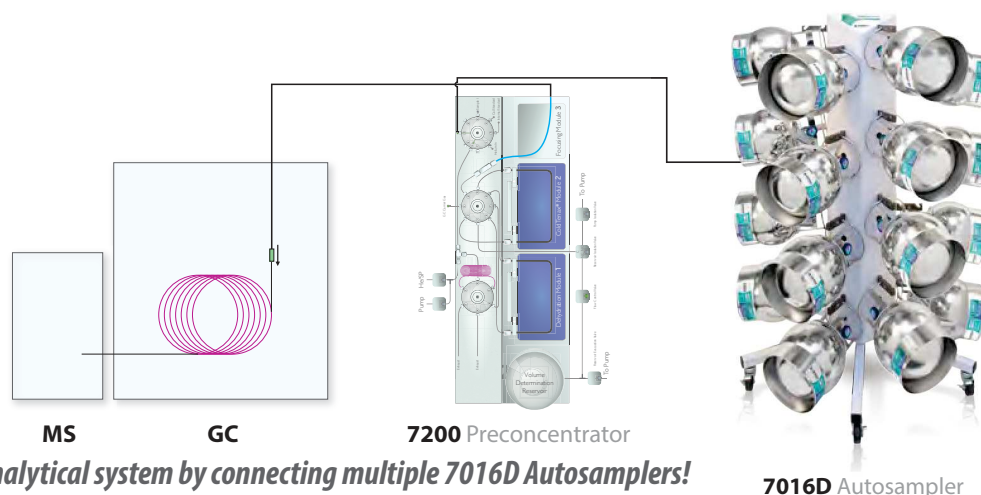
7016D – 2.7L Canister Adapter

DESCRIPTION	PART #	UNIT
7016D Canister Autosampler (16 Position 6L Canister Autosampler w/ Digital Rotary Valve)*	7016D	EA
Silonite™ Coated Valve (for Sulfur Analysis: Silonite™ Digital Rotary Valve w/ connection fittings.)	7016-02	EA
5m SmartLab™ II USB Cable	12-51150	EA
Bracket for 2.7L Canisters	29-23270	EA
Bracket for 0.5 to 1.4L Canisters	19-14010	EA
7016D – 220–240VAC/50Hz Option	7016D-HV	EA

*Silonite™ Canisters sold separately.

7016D Canister Autosampler Connections

Connect up to three 7016D Autosamplers directly to a 7200 Volatiles Preconcentrator and up to two 7016D Autosamplers when connecting to a 7200 | 7650 System. The 7016D is ideal for ambient air samples below 100 PPBv. When mixing ambient air and soil gas samples, the 7650 Autosampler is recommended. A typical 7200 | 7016D configuration is shown below.



Expand your analytical system by connecting multiple 7016D Autosamplers!



7100A (Accessories & Spare Parts)

DESCRIPTION	PART #	UNIT
-------------	--------	------

With Valco® Fittings:

Module 1 Empty Trap	04-11310	EA
Module 1 Glass Bead Trap	04-11320	EA
Module 2 Tenax® Trap	04-11330	EA
Module 1,2 Glass Bead/Tenax® Trap	04-11340	EA
7100A Flow Path Tube Kit	90-71110	EA
1/8" - 1/16" Bulkhead Union	37-01200	EA
1/8" - 1/16" Silonite™ Bulkhead Union	37-01250	EA

With Swagelok®-Style Fittings:

Module 1 Empty Trap	04-11310A	EA
Module 1 Glass Bead Trap	04-11320A	EA
Module 2 Tenax® Trap	04-11330A	EA
Module 1,2 Glass Bead/Tenax® Trap	04-11340A	EA
7100A Flow Path Tube Kit	90-71110A	EA
1/8" - 1/16" Bulkhead Union	30-02043	EA
1/8" - 1/16" Silonite™ Bulkhead Union	30-02043S	EA

Other Parts

9' x 1/32" Silonite™ GC Transfer Line	06-08051	EA
GC Transfer Line Heater	09-33006	EA
Trap Heater (M1/M2)	09-13010	EA
200 nccm MFC (Mass Flow Controller)	03-10200C	EA
Bulkhead Heater/TC Assembly	09-13020	EA
LN ₂ Cryovalve (M1-M3)	01-71760	EA
LN ₂ Sponge (M3)	19-71355	EA
Silonite™ Glass Liner for 7100-01	36-71550	EA
1-Stage Diaphragm Pump Repair Kit	10-20016	EA

DESCRIPTION	PART #	UNIT
-------------	--------	------

4 Sample Inlet (for 1/4" TOV-2 Valves)	09-33203	EA
4 Sample Inlet (for Micro-QT Valves)	09-33410	EA
Syringe Injection Option	7100-01	EA
Silonite™ Valves and Fittings	7100-02	EA



4-Line Heated Inlet PN 09-33203



Syringe Inj. Option PN 7100-01



Empty Trap PN 04-11310



M1 / M2 Trap Heater PN 09-13010

Air Toxics Analysis by GC/MS



7200 Preconcentrator



7016D Canister Tower Autosampler shown with 16 6L Canisters.



7200 | 7016D Air Toxics System – Large Canister 16-Position Inlet

The 7200 Preconcentrator combines with the 7016D Inlet for Ambient Air Toxics Analysis.

The 7200 paired with the 7016D creates an excellent solution for 2.7, 3.2, 6L, and 15L canisters used for ambient level air toxics analysis in compliance with EPA Methods TO-14a and TO-15. The 7200's 4-sample inlet can accommodate the simultaneous connection of up to three 7016D autosamplers to maximize unattended canister analysis. The new 7016D features the time-tested reliability of our popular 7016 Autosampler, along with new SmartLab™ II communication and digital rotary valve control – **for even more reliable valve positioning.**

The 7200 and 7016D both feature Entech's new SmartLab™ II control platform. SmartLab™ II sets a new standard for optimal and reliable instrument communication for Windows® environments. Run time data storage and management is simplified, including a standardized report that presents all the important information you need for straightforward, quality assessment. Now, with the 7200 | 7016D System, analyze your large canisters with confidence!

DESCRIPTION	PART #	UNIT
-------------	--------	------

7200 | 7016D Large Canister Air Toxics System
Instruments and Options:

7200 Preconcentrator (w/o Loop Option)	7200-02	EA
7016D 16-Position Autosampler (See pages 28–29, Canisters Sold Separately)	7016D	EA
7200-02 Silonite™ Flow Path*	7200-A22	EA
7016D 2.7L Canister Bracket*	19-23270	EA
7016D MiniCan™ / Bottle-Vac™ Cradle*	19-14010	EA

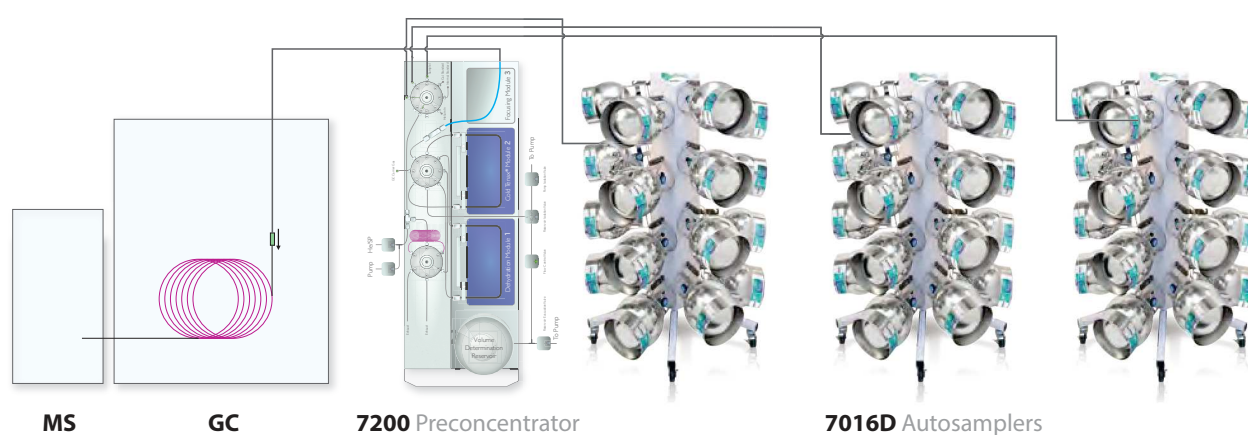
* Optional Items – Contact us for more information and configurations.

7200 / 7016D Air Toxics Analysis System

Features

- Even Better Sample to Sample Isolation**
The 7200 / 7016D Air Toxics System features Accu-Sample™ technology to reduce cross-contamination.
- Automated Analysis**
Accurate analysis of 0.5–1000cc of sample using precise volume determination, great water management, and Accu-Sample™ technology.
- Quantitative Accuracy**
This system ensures sampling and analytical precision is never compromised by changing matrices (air, humid air, nitrogen, helium, CO₂, methane, argon, hydrogen).
- Large Silonite™ Canister Analysis**
Reliably connect and analyze any extra-large canisters in your inventory. Simply connect additional 7016D autosamplers for higher throughput requirements.

7200 | 7016D System Connections



The 7200 and 7016D Air Toxics System
 ultimate precision for large canister analysis.